

BROWN CONSULTING ENGINEERS, INC.

3505 OLSEN • SUITE 110
AMARILLO, TEXAS 79109

(806) 354-0141
FAX: (806) 354-0142

July 17, 2017

BCE, Inc. Project #21723

Memo to: John Jenkins, Lavin Associates, Inc.
From: Seth A. McClellan, P.E.
Subject: A New Building for Maxor Mail Order
Addendum #2

Please forward the following addendum to the contractor for inclusion in the project.

MECHANICAL

- Item 1: Sheet M1.1: Provide and install fire dampers in ductwork as indicated on attached sketch SKM1.1a.
- Item 2: Sheet M1.2: Provide and install fire dampers in ductwork as indicated on attached sketch SKM1.2a.
- Item 3: Specification Section 15820: Add the following paragraphs to the specification section.

2.4 DUCT ACCESS DOORS

- A. Fabricate in accordance with SMACNA HVAC Duct Construction Standards - Metal and Flexible, and as indicated.
- B. Fabrication: Rigid and close fitting of galvanized steel with sealing gaskets and quick fastening locking devices. For insulated ductwork, install minimum 1 inch thick insulation with sheet metal cover.
 - 1. Less Than 12 inches square, secure with sash locks.
 - 2. Up to 18 inches Square: Provide two hinges and two sash locks.
 - 3. Up to 24 x 48 inches: Three hinges and two compression latches
 - 4. Larger Sizes: Provide an additional hinge.
 - 5. Access panels with sheet metal screw fasteners are not acceptable.

2.5 FIRE DAMPERS

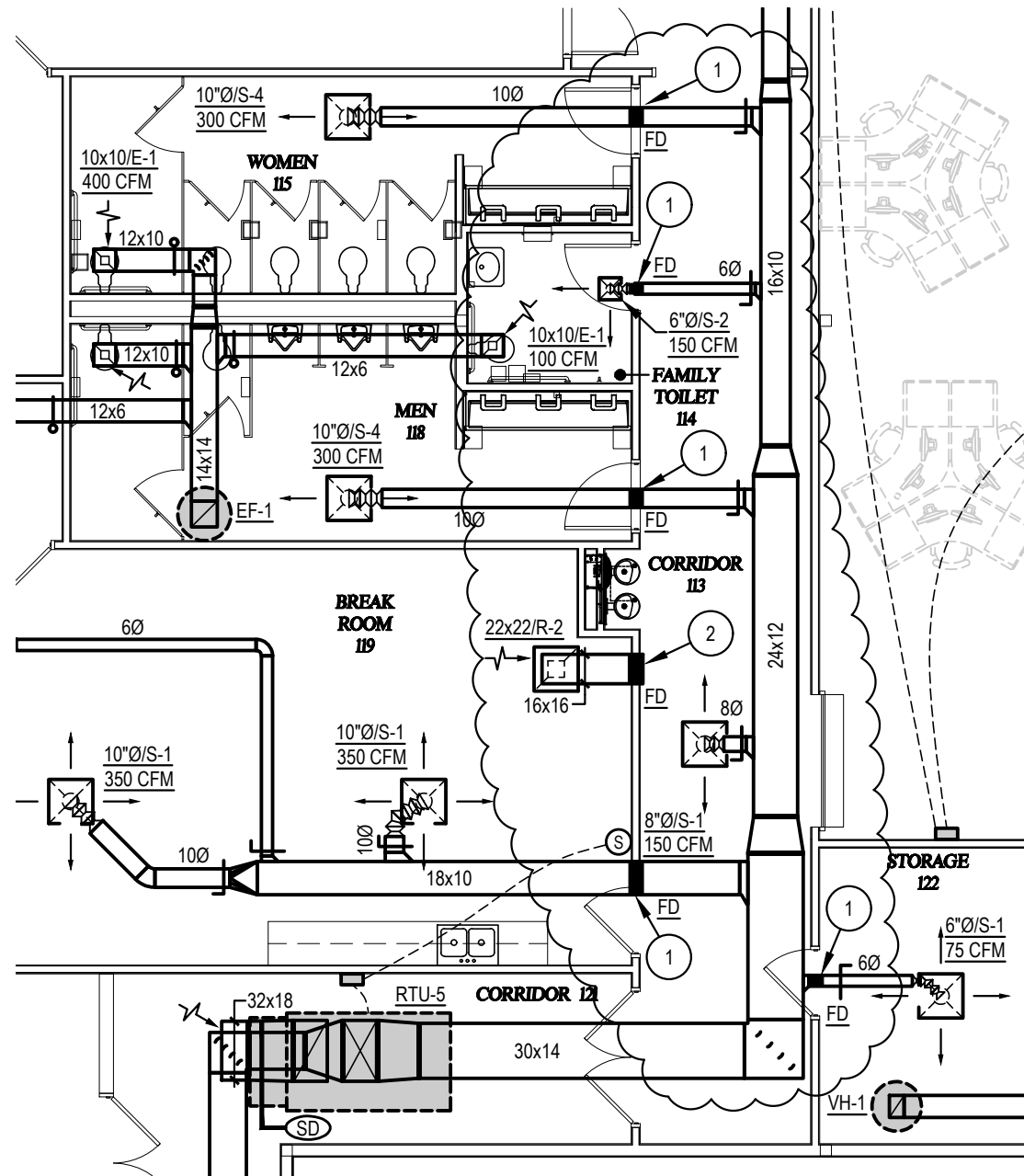
- A. Manufacturers:
 - 1. Ruskin:
 - a) Round Ducts at floor penetrations – Model FDR-25
 - b) Round/Oval Ducts at Wall penetration – Model DIBD2 Style CR/CO
 - c) Rectangular ducts at wall penetration – Model DIBD2 Style B
- B. Substitutions: Approved equal dampers by;
 - 1. Pottorf
 - 2. United Air

- C. Construction:
1. Provide in accordance with NFPA 90A and UL 555, and manufacturer's condition of listing. Dampers shall be permanently marked for use in dynamic systems.
 2. Designed to operate with blade running horizontally, approved for vertical or horizontal mounting.
 3. 20 gage steel retaining plate
 4. 20 gage galvanized steel frame
 5. two piece equivalent 14 gauge blade.
 6. Stainless steel bearings
 7. Fusible Links: UL 33, separate at 165 degrees F
- D. Picture Frame Mounting Angles:
1. One-piece, roll formed retaining angles 1-1/2 x 1-1/2 inches
 2. Factory matched and shipped on individual damper.
 3. Factory prepunched screw holes.
 4. Requires factory sleeve.

End of Addendum #2



July 17, 2017
Texas Registered Engineering Firm
F-683



SCALE: 1/8"=1'-0"

KEYED NOTES:

- 1 INSTALL FIRE DAMPER IN SUPPLY DUCT AT WALL PENETRATION. INSTALL DUCT ACCESS DOOR ABOVE CORRIDOR CEILING.
- 2 INSTALL FIRE DAMPER IN RETURN DUCT AT WALL PENETRATION.

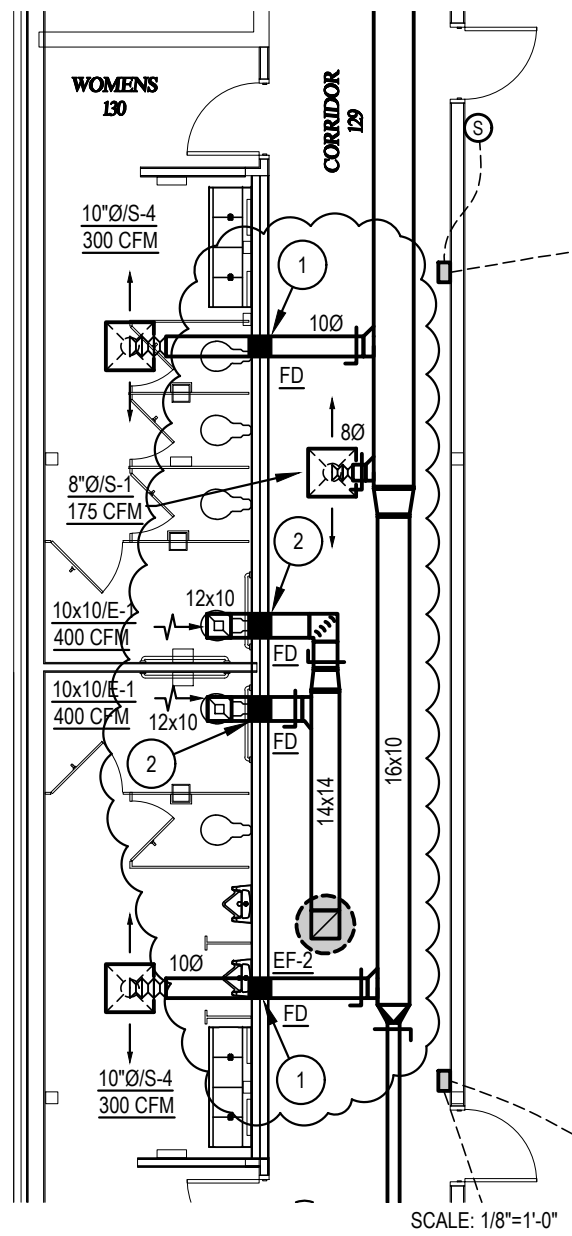


3505 Olsen • Suite 110 • Amarillo, Texas 79109
Texas Registered Engineering Firm F-683



July 17, 2017

**A New Building for
Maxor Mall Order
4th Avenue & Tyler St.
Amarillo, Tx
SHEET SKM1.1a
DATE: 7-17-17
Addendum #2**



SCALE: 1/8"=1'-0"

KEYED NOTES:

- 1 INSTALL FIRE DAMPER IN SUPPLY DUCT AT WALL PENETRATION. INSTALL DUCT ACCESS DOOR ABOVE CORRIDOR CEILING.
- 2 INSTALL FIRE DAMPER IN EXHAUST DUCT AT WALL PENETRATION. INSTALL DUCT ACCESS DOOR ABOVE CORRIDOR CEILING.